



**SANY**

Quality Changes the World

Operating Weight : 21400 kg    Bucket Capacity : 0.9-1.0 m<sup>3</sup>    Engine Power : 155 HP (115.5 KW)/ 2050 rpm

**EXCELLENT PERFORMANCE**  
**HIGH RELIABILITY**  
**EASE OF SERVICEABILITY**



SERIES 9

**SY215C**

HYDRAULIC EXCAVATOR

# SPECIFICATIONS

# SY215C-9

## ENGINE

Model	SANY Mitsubishi D06S2
Type	6 Cylinder, Inline, Water Cooled
Rated Engine Power	155HP(115KW) @ 2050 rpm
Max. Torque	578.59 N.m @ 1400rpm
Batteries	2 X 12 V
Displacement	5.86L

## CONTROL SYSTEM

Control System	DOMCS Intelligent Controller
Working Modes	H S L B
Remote Monitoring System	GPRS, GPS, GIS

## HYDRAULIC SYSTEM

Main Pumps	2 Variable Displacement Axial Piston Pumps
Max. Flow	2 X 220 lpm
Pilot Pump	1 Gear Pump
Travel Motor	2 Axial Piston Motor with Parking Brake
Swing Motor	1 Axial Piston Motor with Swing Holding Brake

## RELIEF VALVE SETTINGS

Implement Circuit	34.3 Mpa
Swing Circuit	25.5 Mpa
Travel Circuit	34.3 Mpa
Pilot Circuit	3.9 Mpa

## UNDERCARRIAGE & WORKING DEVICE

Track Shoes (Each Side)	47
Upper Rollers	2
Lower Rollers	8
Track Guard (Each Side)	1
Std. Track	600 mm
Std. Boom	5700 mm
Std. Arm	2400 mm
Std. Bucket	1.0 m <sup>3</sup> GP

## PERFORMANCE

Max. Travel Speed(High/Low)	5.4/3.3 km/h
Swing Speed	11 rpm
Grade ability	70% / 35°
Ground Pressure	47.3 kPa
Max. Tracking Force	209 kN
Bucket Digging Force	138 kN
Arm Digging Force	129 kN

## SERVICE REFILL CAPACITIES

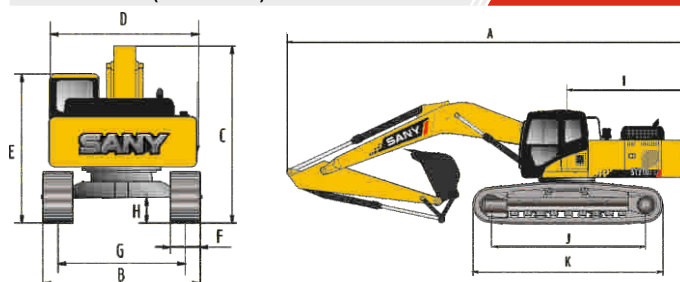
Hydraulic Tank	230L (Tank)	170 (Refill)
Fuel Tank	340 L	
Engine Oil	22.75L	
Radiator	24L	
Swing Device	4 L	
Travel Device	2×5.5 L	

## CAB

AC	Opt.
Cabin Guard	Opt.

\*12mm Track shoe is also available (Optional).

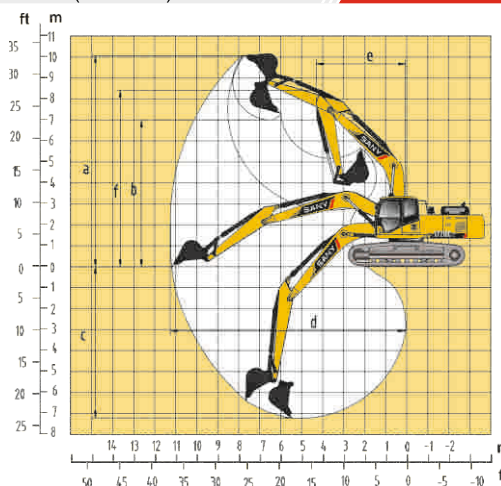
## DIMENSION (Unit: mm)



## DIMENSION (Unit: mm)

	Arm 2400	Arm 2900
A. Overall Length	9650	9680
B. Overall Width	2980	2980
C. Overall Height	3440	3440
D. Upper Width	2875	2875
E. Overall Height of Cab	3075	3075
F. Std. Track Shoe Width	600	600
G. Track Gauge	2380	2380
H. Min. Ground Clearance	440	440
I. Rear-end Swing Radius	2900	2900
J. Distance between Tumbles	3445	3445
K. Under Carriage Length	4250	4250

## WORKING RANGE (Unit: mm)



## WORKING RANGE

	Arm 2400	Arm 2900
a. Max. Cutting Height	9113	9600
b. Max. Dumping Height	6252	6730
c. Max. Digging Depth	6037	6600
d. Max. Digging Reach	9312	10280
e. Min. Swing Radius	3730	3730
f. Max. Height at Min. Swing Radius	7680	7680

## BUCKET

Capacity	Width (mm)	Weight (kg)	Tooth Point	Arm Length	
				2.4	2.9
1 m <sup>3</sup> GP-Std.	1316	780	5	✓	✓
0.9 m <sup>3</sup> HD-Opt.	1176	870	4	✓	✓

## SANY HEAVY INDUSTRY INDIA PVT. LTD.

### HEAD OFFICE

Address : Plot No. E-4, Chakan Industrial Area Phase-III, Village Kuruli, Taluka Khed, District Pune - 410501, Maharashtra, INDIA.

Tel : +91 21 35670288, Fax: +91 21 35670300

E-mail : [customercare@sany.in](mailto:customercare@sany.in)

Website : [www.sany.in](http://www.sany.in)

**Toll Free No.: 1800-209-3337**



Material & specification are subject to change without prior notice in accordance with our continuous technical innovations. Featured machines in photos may include additional equipment.